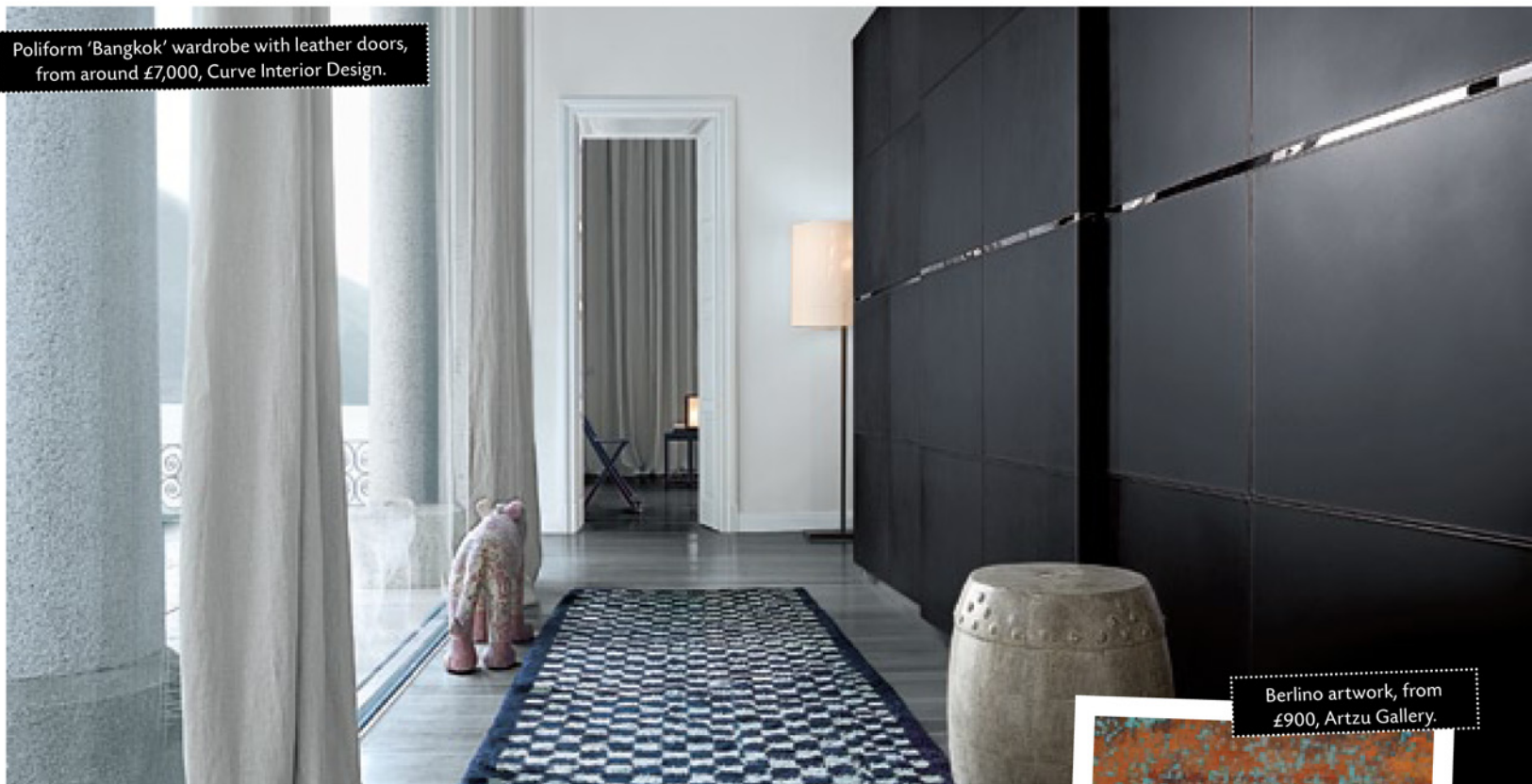
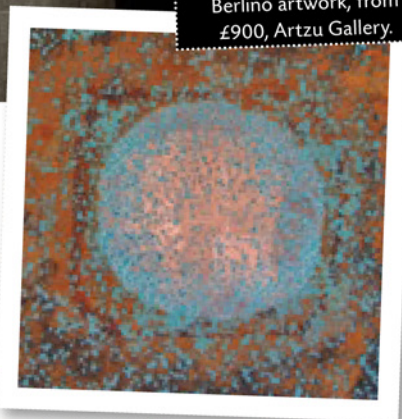


Poliform 'Bangkok' wardrobe with leather doors, from around £7,000, Curve Interior Design.



Berlino artwork, from £900, Artzu Gallery.



## GLAMOROUS OUTLOOK

Lucy Clarke, co-owner of Manchester-based Curve Interior Design, envisages a return to more luxurious finishes in the home, alongside rich colour and texture.

### WHAT DO YOU PREDICT WILL BE A KEY TREND FOR 2010?

"A major trend for 2010 is 'a new decade'. We want to see that extra bit of luxury and glamour in homes which reflects the optimism we hope the country will be feeling as the year begins."

"Quality finishes such as leather, bronzed glass and marble will feature heavily, along with rich colour in olive green with walnut, highlighted with powdery pinks and blues."

"Look to layers of beautifully patterned throws and cushions and use artwork with the 'wow' factor to provide texture and depth."

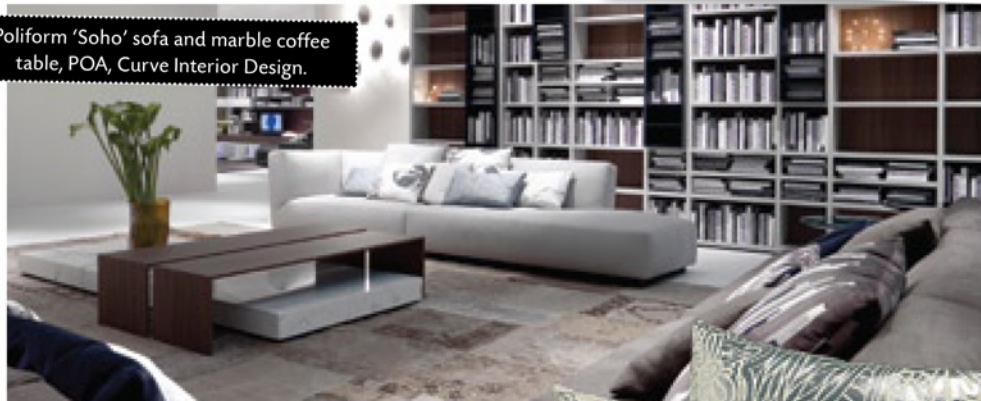
### HOW WILL THESE TRENDS BE APPLIED TO THE MODERN HOME?

"Specifically, we are looking at panelled padded walls to bedrooms, sliding tinted glass dividing open-plan areas, stitched leather on wardrobe doors and occasional furniture."

"The use of high end natural materials such as marble and quartzite in kitchens and bathrooms."

Curve Interior Design. Tel. 0161 237 9300 or visit: [www.curveinteriordesign.co.uk](http://www.curveinteriordesign.co.uk)

Poliform 'Soho' sofa and marble coffee table, POA, Curve Interior Design.



### LUCY'S TOP TIP...

"Warm up walls with a combination of textured wallpaper and tonal paint. Add items such as a deep pile rug, glamorous cushions and opal glass lighting for a touch of luxury."



Missoni cushions from the 'Golden Age' collection, from £106, Curve Interior Design.